

CERTIFICATE OF PERFORMANCE

Surveyor's Certificate
State of Mississippi
County of Madison

I, KIMBLE D. SLATON, Land Surveyor do hereby certify that I have subdivided and platted the following described land being situated in the NW ¼ & SW ¼, Section 29, Township 8 North, Range 1 East, Madison County, Mississippi, and being more particularly described as follows:

Beginning at the Northwest corner of the Northeast 1/4 of the Northwest 1/4 of Section 29, Township 8 North, Range 1 East, Madison County, Mississippi; thence along the South lines of those tracts, William Burke recorded in Deed book 383 on page 39 of the Land Records of Madison County, Wilson Montjoy recorded in Deed book 2614 on page 132, and Robert Clincy recorded in Deed book 286 on page 406 of the Land Records of Madison County, Mississippi, run N89°55'26"E a distance of 1306.96' to a 1/2" rebar in concrete in the West right of way of Madison County Gus Green Road marking the Northeast corner of the herein described property; thence along said right of way the following bearings and distances: S1°22'26"E a distance of 150.53' to a set 1/2" rebar; thence run S0°23'15"E a distance of 313.10' to a set 1/2" rebar; thence S0°23'15"E a distance of 301.78' to a set 1/2" rebar; thence S1°01'34"W a distance of 110.99' to a set 1/2" rebar; thence S1°01'34"W a distance of 427.53' to a set 1/2" rebar; thence S1°01'34"W a distance of 417.08' to a set 1/2" rebar; thence S1°01'34"W a distance of 401.75' to a set 1/2" rebar; thence S1°01'34"W a distance of 193.37' to a set 1/2" rebar; thence S1°07'50"E a distance of 255.58' to a set 1/2" rebar; thence S1°07'50"E a distance of 395.89' to a found 1/2" rebar in concrete marking the Southeast corner of the herein described property; thence leaving said right of way and along the North lines of the Gus Green Estate Tracts recorded in Deed Book 2649 at Page 272 and PPIN 21280 of said Land Records run S89°56'38"W a distance of 2445.41' to a found 1/2" rebar on the Easterly top bank of a drainage ditch; thence along said top bank with its meanderings run the following courses and distances: N31°38'02"E a distance of 467.71'; thence N31°38'02"E a distance of 418.43'; thence N10°39'59"E a distance of 94.24'; thence N10°39'59"E a distance of 408.74'; thence N10°39'59"E a distance of 403.71'; thence N21°27'31"E a distance of 459.30'; thence N21°27'31"E a distance of 442.51'; thence N21°01'07"E a distance of 334.03' to a found 1/2" rebar; thence N21°01'07"E a distance of 160.73' back to the Point of Beginning, containing 124.4 Acres, more or less.

WITNESS MY SIGNATURE on this the ___ day of ___ 20___
Registration Number: 02678

Kimble D. Slaton, Land Surveyor

SURVEYORS CERTIFICATE OF COMPLIANCE WITH SUBDIVISION REGULATIONS
STATE OF MISSISSIPPI
COUNTY OF MADISON

I hereby certify that the monuments and markers shown hereon are in place on the ground and the plan and plat shown described hereon are a true and correct representation of a survey to the accuracy designated in the Subdivision Regulations for Madison County, Mississippi.

WITNESS MY SIGNATURE on this the ___ day of ___ 20___
Registration Number: 02678

Kimble D. Slaton, Land Surveyor

OWNER'S CERTIFICATE OF OWNERSHIP AND DEDICATION
STATE OF MISSISSIPPI
COUNTY OF MADISON

The undersigned owner(s) of the property shown hereon hereby adopt this plat as in (our) plan of subdivision and dedicate the streets, right of ways and easements as shown hereon to public use forever.

(NO STREETS, RIGHT OF WAYS, OR EASEMENTS EXIST)
WITNESS MY SIGNATURE on this the ___ day of ___ 20___

Property Owner

Gulf Guaranty Life Insurance Company

COUNTY ENGINEER'S RECOMMENDATION

STATE OF MISSISSIPPI
COUNTY OF MADISON

I have examined this plat and find it conforms to all conditions set forth on the preliminary plat as approved by the Board of Supervisors and thus recommend final approval.

WITNESS MY SIGNATURE on this the ___ day of ___ 20___
County Engineer
Madison County

Rudy M. Warnock Jr.

APPROVAL OF THE BOARD OF SUPERVISORS
STATE OF MISSISSIPPI
COUNTY OF MADISON

I hereby certify that this is a true copy and that this plat was approved by the Board of Supervisors in session on the ___ day of ___ 20___.

WITNESS MY SIGNATURE on this the ___ day of ___ 20___
Board President

Karl M. Banks

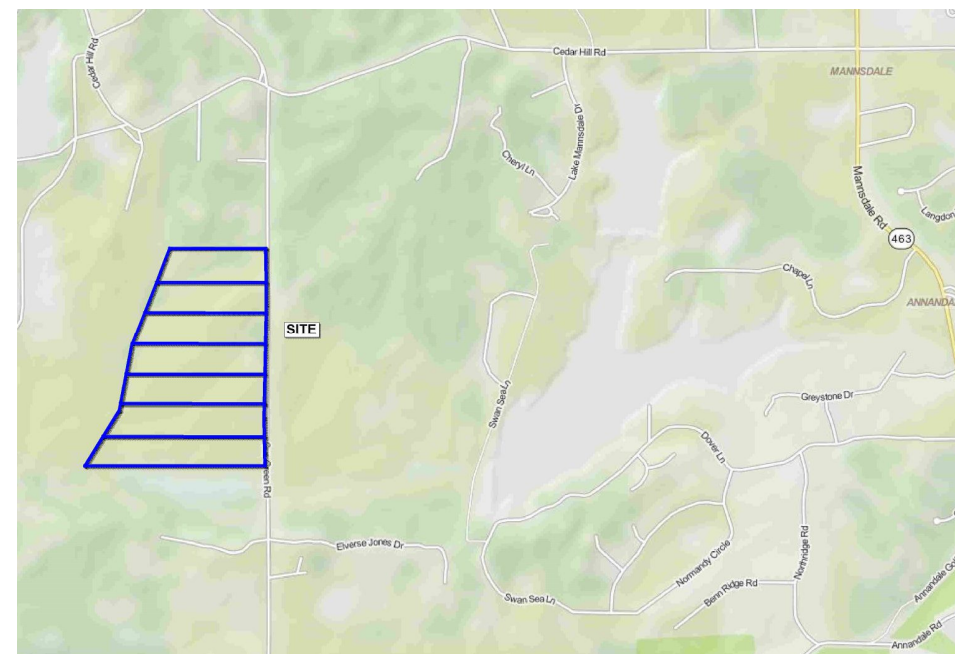
FILING AND RECORDATION

STATE OF MISSISSIPPI
COUNTY OF MADISON

I, Ronnie Lott, Clerk of the Chancery Court is and for said County and State, do hereby certify that the final plat for ___ was filed for record in my office on this the ___ day of ___ 2015 and was duly recorded in Plat Cabinet ___ of the records of maps and plats of land in Madison County, Mississippi.

WITNESS MY SIGNATURE on this the ___ day of ___ 20___
Chancery Clerk

Ronny Lott



VICINITY MAP - NTS



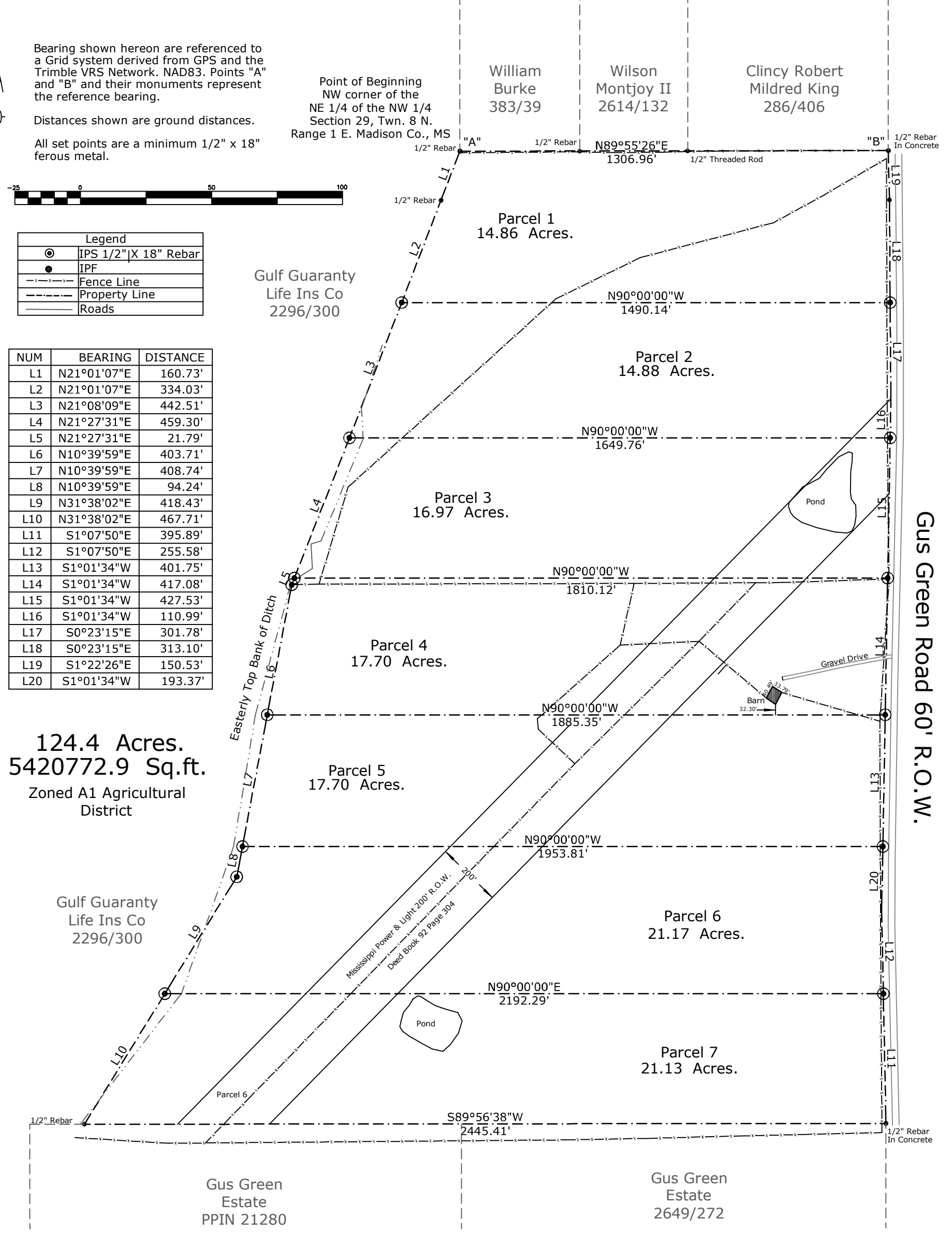
Bearing shown hereon are referenced to a Grid system derived from GPS and the Trimble VRS Network. NAD83. Points "A" and "B" and their monuments represent the reference bearing.
Distances shown are ground distances.
All set points are a minimum 1/2" x 18" ferrous metal.



Legend		
⊙	IPS 1/2" X 18" Rebar	
●	IPF	
---	Fence Line	
---	Property Line	
---	Roads	

NUM	BEARING	DISTANCE
L1	N21°01'07"E	160.73'
L2	N21°01'07"E	334.03'
L3	N21°08'09"E	442.51'
L4	N21°27'31"E	459.30'
L5	N21°27'31"E	21.79'
L6	N10°39'59"E	403.71'
L7	N10°39'59"E	408.74'
L8	N10°39'59"E	94.24'
L9	N31°38'02"E	418.43'
L10	N31°38'02"E	467.71'
L11	S1°07'50"E	395.89'
L12	S1°07'50"E	255.58'
L13	S1°01'34"W	401.75'
L14	S1°01'34"W	417.08'
L15	S1°01'34"W	427.53'
L16	S1°01'34"W	110.99'
L17	S0°23'15"E	301.78'
L18	S0°23'15"E	313.10'
L19	S1°22'26"E	150.53'
L20	S1°01'34"W	193.37'

124.4 Acres.
5420772.9 Sq.ft.
Zoned A1 Agricultural District



(T:)/ drawings/drawings2015/ Jim Robertson/ Gus Green

CTSI
Cadastral & Topographic Surveying, Inc.
Land Surveying * 3-D Laser Mapping * Wastewater Consulting
95 Business Park Drive, Vicksburg, Ms 39180 - www.cadtopo.com - 601-636-9525

Subdivision of Gulf Guaranty Life Insurance Company Tract
Part of Section 29, T18N-R1E
Madison County, MS

Date of Survey: 6/4/2015
Drawn by: C. Simms
Approved by: K. Slaton P.S.
Scale" 1" = 400'